



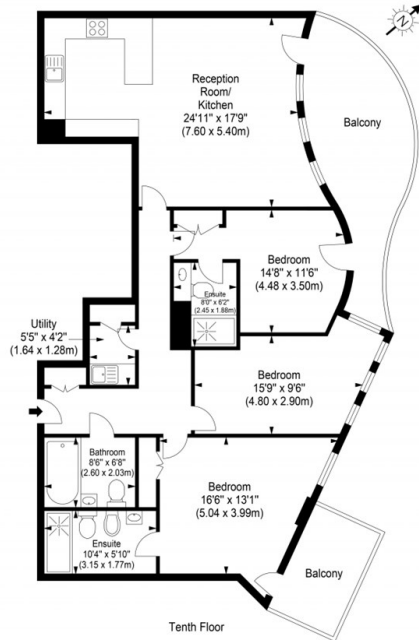
Pinnacle House, Battersea Reach

Reduced To £1,700,000

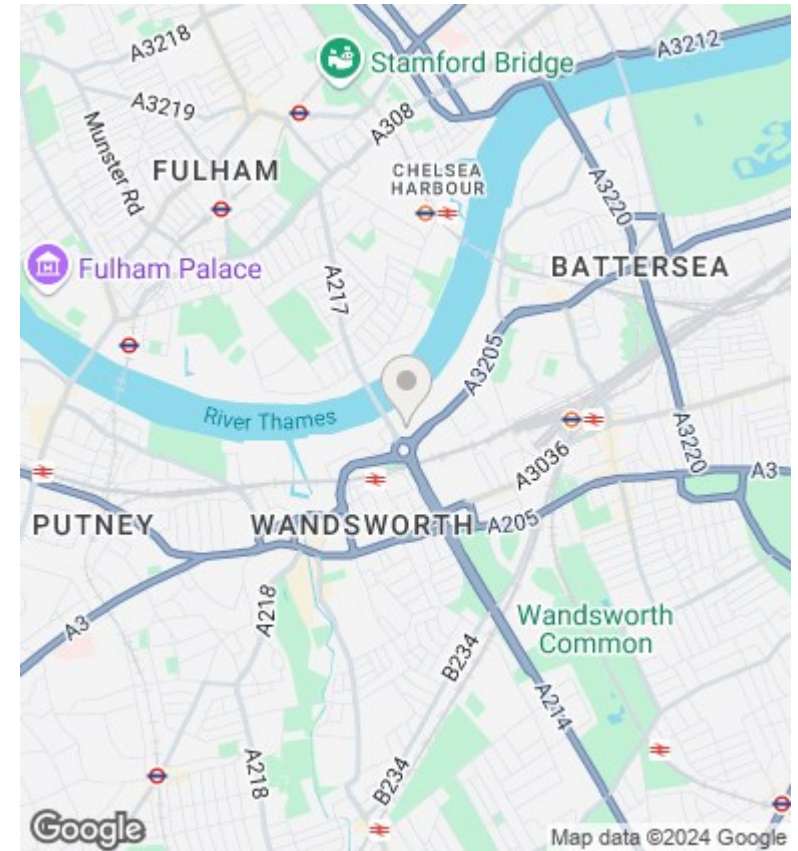
- Master Bedroom
- Bathroom (Ensuite)
- Lift
- 24/7 Concierge
- Second Bedroom
- Reception Room
- Parking
- Third Bedroom
- Kitchen
- Gym Facilities

**Pinnacle House,
Juniper Drive, London, SW18 1JE**

Approx. Gross Internal Area 1210 sq ft - 112.37 sq m



Ref: [Redacted] Copyright THE BLEU PLAN
 Disclaimer: Floor plan measurements are approximate and are for illustrative purposes only. While we do not doubt the floor plan accuracy and completeness, you or your advisors should conduct a careful, independent investigation of the property in respect of monetary valuation.



Directions

Viewings

Viewings by arrangement only. Call 02070990800 to make an appointment.

Council Tax Band

G

EPC Rating:

B

| Energy Efficiency Rating | | |
|---|-------------------------|-----------|
| | Current | Potential |
| Very energy efficient - lower running costs | | |
| (92 plus) A | | |
| (81-91) B | 86 | 86 |
| (69-80) C | | |
| (55-68) D | | |
| (39-54) E | | |
| (21-38) F | | |
| (1-20) G | | |
| Not energy efficient - higher running costs | | |
| England & Wales | EU Directive 2002/91/EC | |